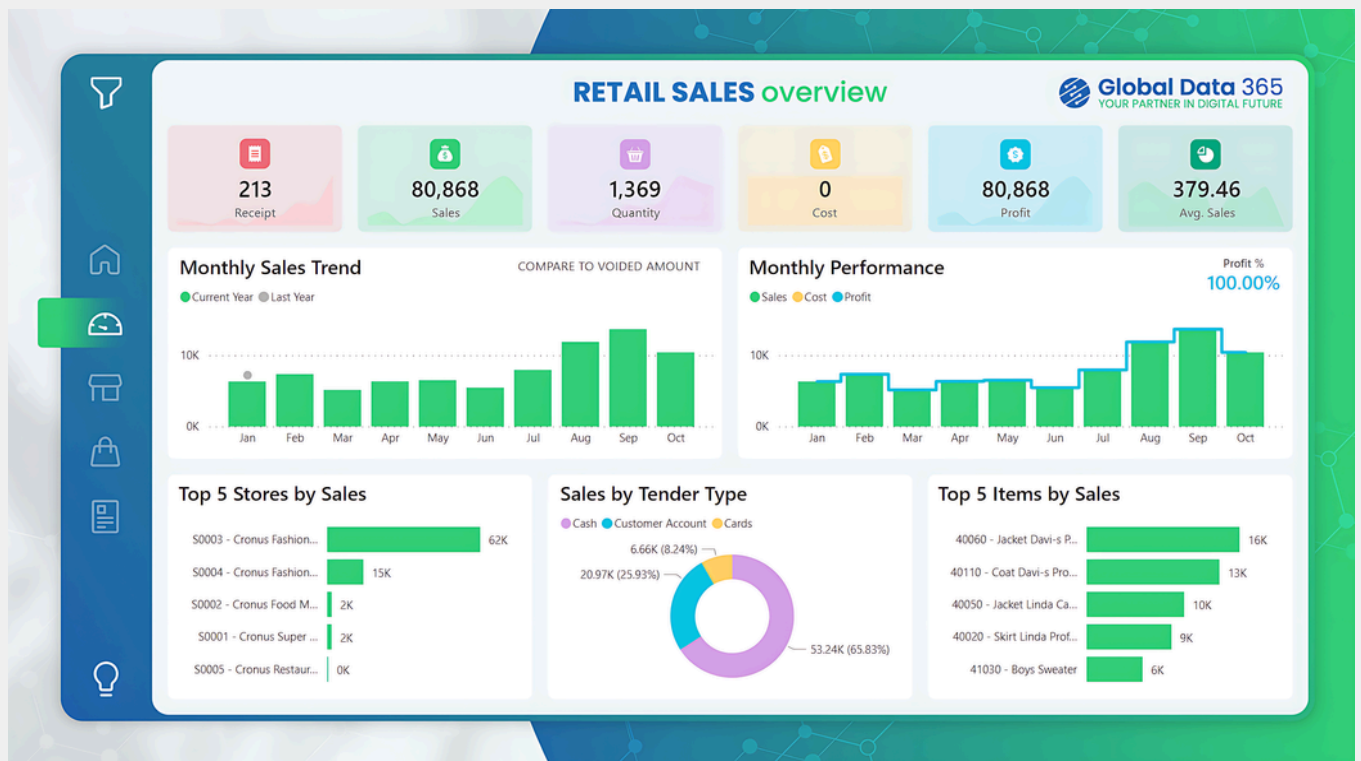


GUIDANCE POINT

- ✓ EXPERIENCED MENTOR
- ✓ 100% JOB ORIENTED COURSE
- ✓ 100% PLACEMENT SUPPORT
- ✓ OFFLINE/ONLINE

POWER BI
COURSE
IN PUNE
PROJECTS





SALES PERFORMANCE DASHBOARD FOR A RETAIL CHAIN:

Students will create a comprehensive sales performance dashboard for a retail chain operating across Pune. By importing sales data from various branches, students will use Power Query for data cleaning and transformation, and DAX for advanced calculations. The dashboard will include key metrics such as total sales, sales by region, top-selling products, and year-over-year growth. Interactive features like slicers and drill-down capabilities will allow users to explore the data in depth and make data-driven decisions to optimize sales strategies.



EMPLOYEE PRODUCTIVITY AND ATTENDANCE TRACKER:

In this project, students will develop a Power BI report to track employee productivity and attendance for a mid-sized company in Pune. The project involves integrating HR data from multiple sources, including time-tracking software and performance evaluation records. Students will create visualizations to display attendance patterns, productivity scores, and correlations between attendance and performance. The final report will help HR managers identify trends, address attendance issues, and implement measures to improve overall employee productivity.



8623006799



[GUIDANCEPOINT.IN](https://www.guidancepoint.in)

[@GUIDANCEPOINT](https://twitter.com/GUIDANCEPOINT)



CUSTOMER FEEDBACK ANALYSIS FOR A SERVICE INDUSTRY:

Students will analyze customer feedback data for a service-oriented business in Pune, such as a hotel or a restaurant chain. By using Power BI's natural language processing capabilities, students will categorize feedback into positive, negative, and neutral sentiments. They will create dashboards that display sentiment trends over time, highlight common themes in customer feedback, and correlate feedback with business metrics like customer retention and revenue. This project will enable business managers to understand customer satisfaction levels and make informed improvements to their services.



FINANCIAL PERFORMANCE ANALYSIS FOR A STARTUP:

In this project, students will create a financial performance dashboard for a startup based in Pune. By consolidating data from accounting software, bank statements, and expense reports, students will use Power BI to visualize key financial metrics such as revenue, expenses, profit margins, and cash flow. The dashboard will also include budget vs. actual analysis and financial forecasts. This project will provide startup founders and investors with insights into the financial health of the company and help them make informed financial decisions.



TRAFFIC PATTERN ANALYSIS FOR URBAN PLANNING:

Students will analyze traffic data collected from sensors, cameras, and GPS devices to assess traffic patterns and congestion levels in Pune city. Using data visualization tools and spatial analysis techniques, students will identify high-traffic areas, peak hours, and traffic flow dynamics to inform urban planning and transportation infrastructure development initiatives. The project aims to enhance traffic management efficiency and alleviate congestion in Pune's urban areas.



HEALTHCARE ANALYTICS FOR HOSPITAL MANAGEMENT:

In collaboration with a healthcare institution in Pune, students will undertake a healthcare analytics project aimed at optimizing hospital management processes. Using Power BI, students will analyze patient data, including demographics, medical history, and treatment outcomes, to identify patterns and trends. The project will involve developing data-driven insights to improve resource allocation, patient care, and operational efficiency within the hospital setting. Visualizations will include patient flow analysis, treatment effectiveness, and resource utilization.



8623006799



GUIDANCEPOINT.IN

@GUIDANCEPOINT